

Public Protection and Communities Scrutiny Committee

**Trading Standards Animal Health
and Welfare Enforcement in
Lincolnshire**

Disease Control



Animal By-Products



High Risk Activities -Transportation and Markets

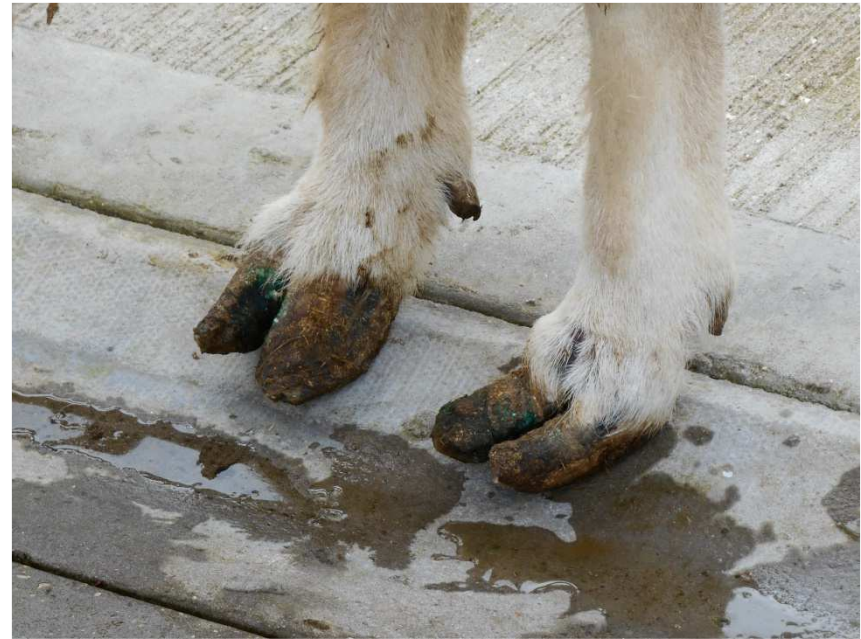


High Risk Activities – Rendering Plant



Welfare – Unnecessary Suffering

Failing to Provide Treatment



Animal Health and Welfare Framework Local Authority Responsibilities

- Service Planning;
- Transparent Complaints Process;
- Regional and National Engagement;
- Contingency Planning;
- Training and Competency, and
- Reporting.

Animal Health and Welfare Framework

Service Planning

- Produce an annual programme of **interventions for all high risk businesses and activities** based on the risk presented by the activities carried out, intelligence, history of compliance and available resources.
- Ensure that services consider the requirements laid down in the **On Farm Charter and Regulators Code** where appropriate.

Animal Health and Welfare Framework

Prioritising Complaints

- Develop a **risk based, consistent and accessible process for responding to complaints** relating to animal health matters on farm.
- **Provide transparency** about how the local authority responds to **animal welfare complaints** and works collaboratively with partners to respond to these.

Animal Health and Welfare Framework

Regional and National Collaboration.

- Actively engage in **regional animal health and welfare groups**, attending meetings where possible and contributing to regional discussions about the implementation of the Framework.
- **Work closely with other local authorities** to share intelligence, knowledge and expertise, including opportunities for shared training, joint inspections, opportunities for contracting and peer to peer reviews.

Animal Health and Welfare Framework

Contingency Planning

- Each local authority must have an **up to date animal disease contingency plan** in place, which is shared internally and with partners. Contact details are to be revised as changes happen. The plan should be updated within two years of any changes to the national template.
- Local authorities should ensure that contact details on the **Local Authority Master Contact List** are updated in a timely fashion..

Role of local authorities under the revised Framework – Training and Competency

- Officers involved in the delivery of animal health and welfare controls should be **trained and qualified in line with local standards and authorisation processes**. Local processes should ensure officers are competent in the delivery of effective animal health and welfare controls. As with all responsible employers, local authorities should support staff with personal development processes and training.

Animal Health and Welfare Framework Reporting

- **Use the Framework to promote the delivery of animal health and welfare controls to managers and local politicians.**
- **Complete statutory data returns in a timely manner.**

Animal Health & Welfare Activity and Outcomes 2019-2020

- 441 Complaints/Referrals Received
 - 80 Animal movement breaches
 - 71 Animal welfare
 - 69 Abattoir referrals (relating to welfare & ID)
 - 66 Bovine TB

Animal Health & Welfare Activity and Outcomes 2019-2020

- 122 Inspections undertaken
 - 94 Compliant
 - 28 non compliant requiring remedial action
 - 84% compliant or brought into compliance
 - 16% (8 Premises) ongoing enforcement.

Animal Health & Welfare Activity and Outcomes in 2019-2020

- Abattoir Referrals Investigated Nationally
- COVID-19 Threat Analysis
- Farmed Livestock in Severe Flooding Plan Reviewed